

# The Emotional GAN

## Priming Adversarial Generation of Art with Emotion

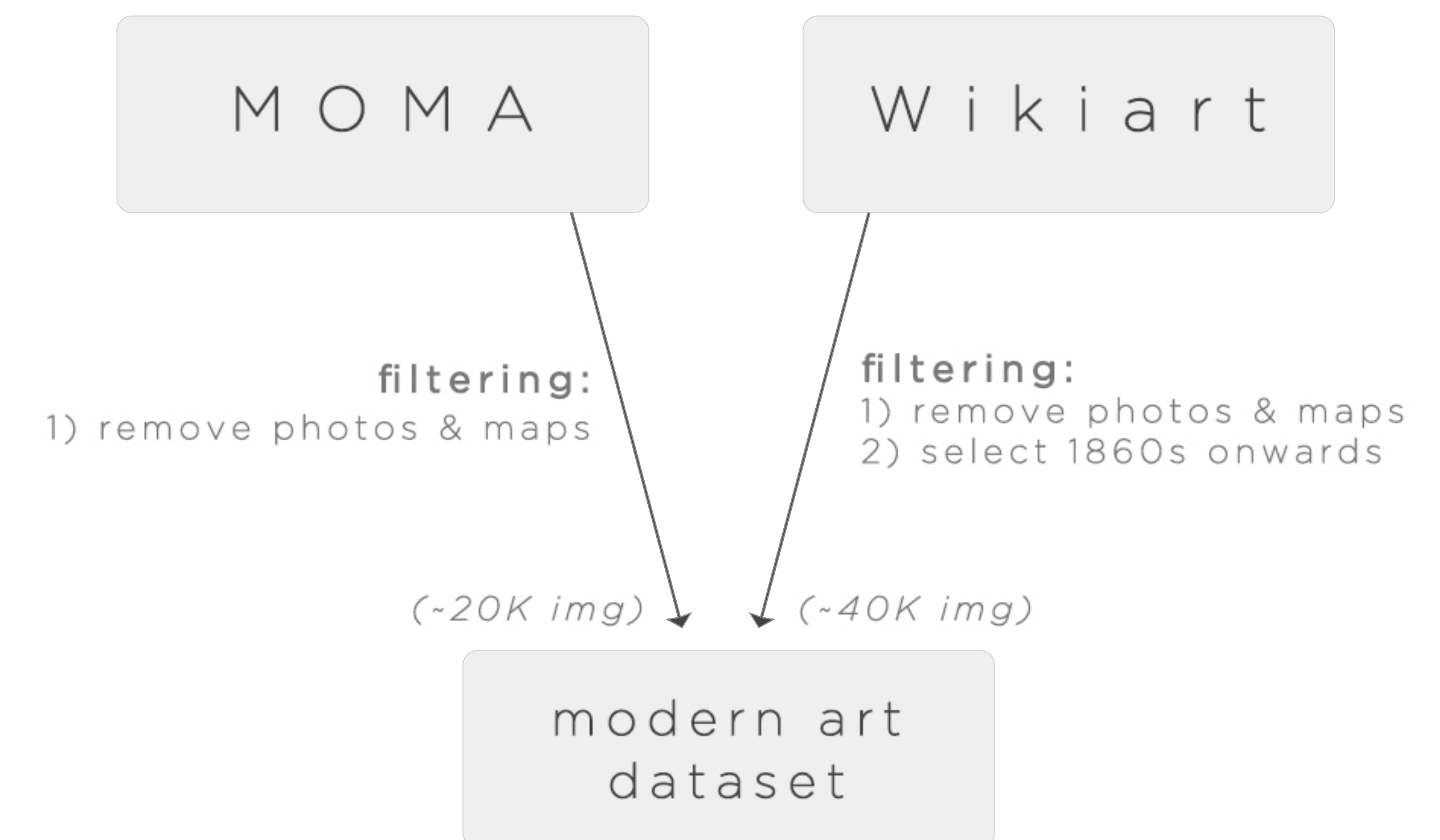
More generated artworks and open dataset:  
[emotion2art.media.mit.edu](http://emotion2art.media.mit.edu)

### SUMMARY

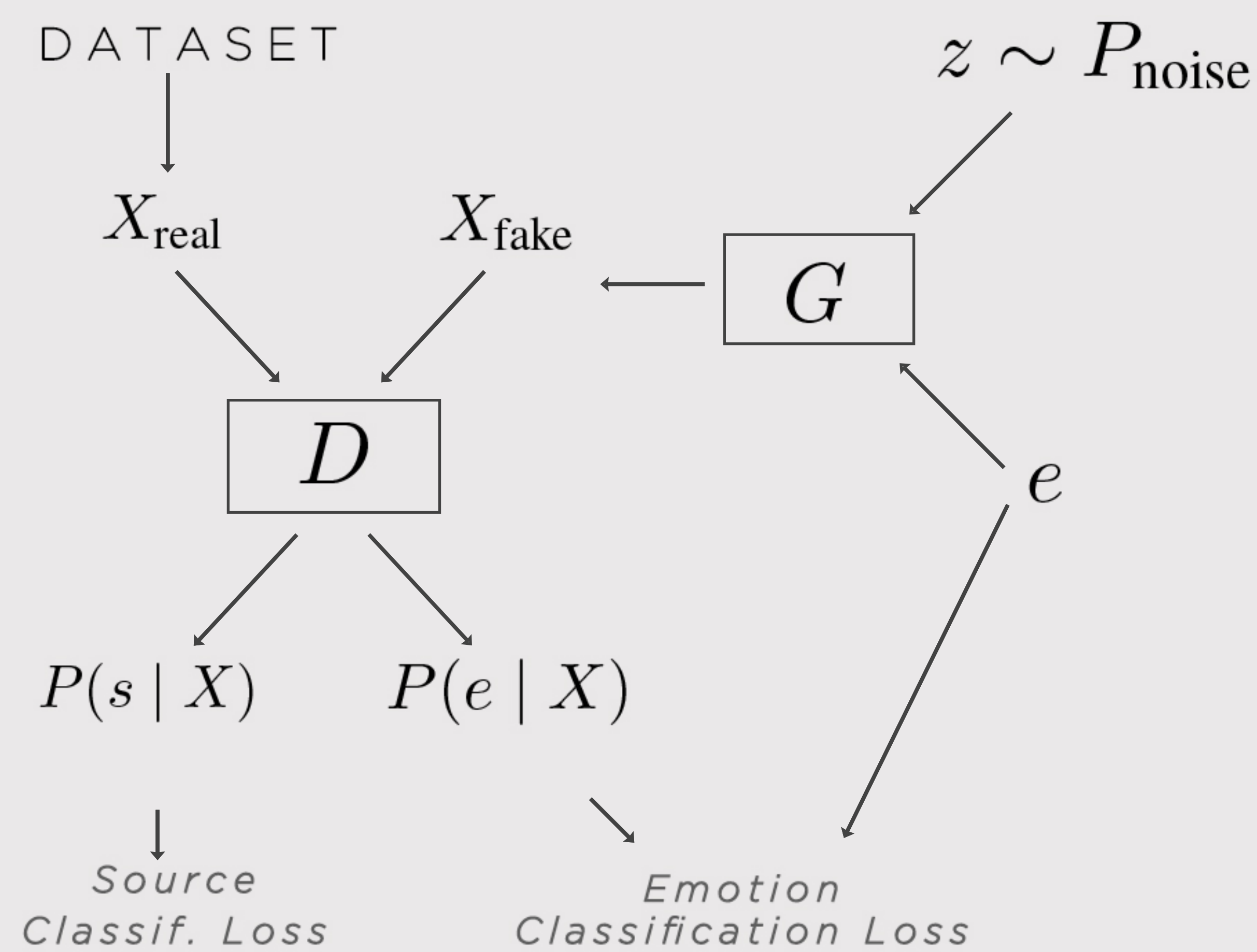
- Neural Net to turn emotion into art
- Class-conditioned GAN trained on modern artworks labeled with emotions
- Dataset made of a large-scale user study of art perception



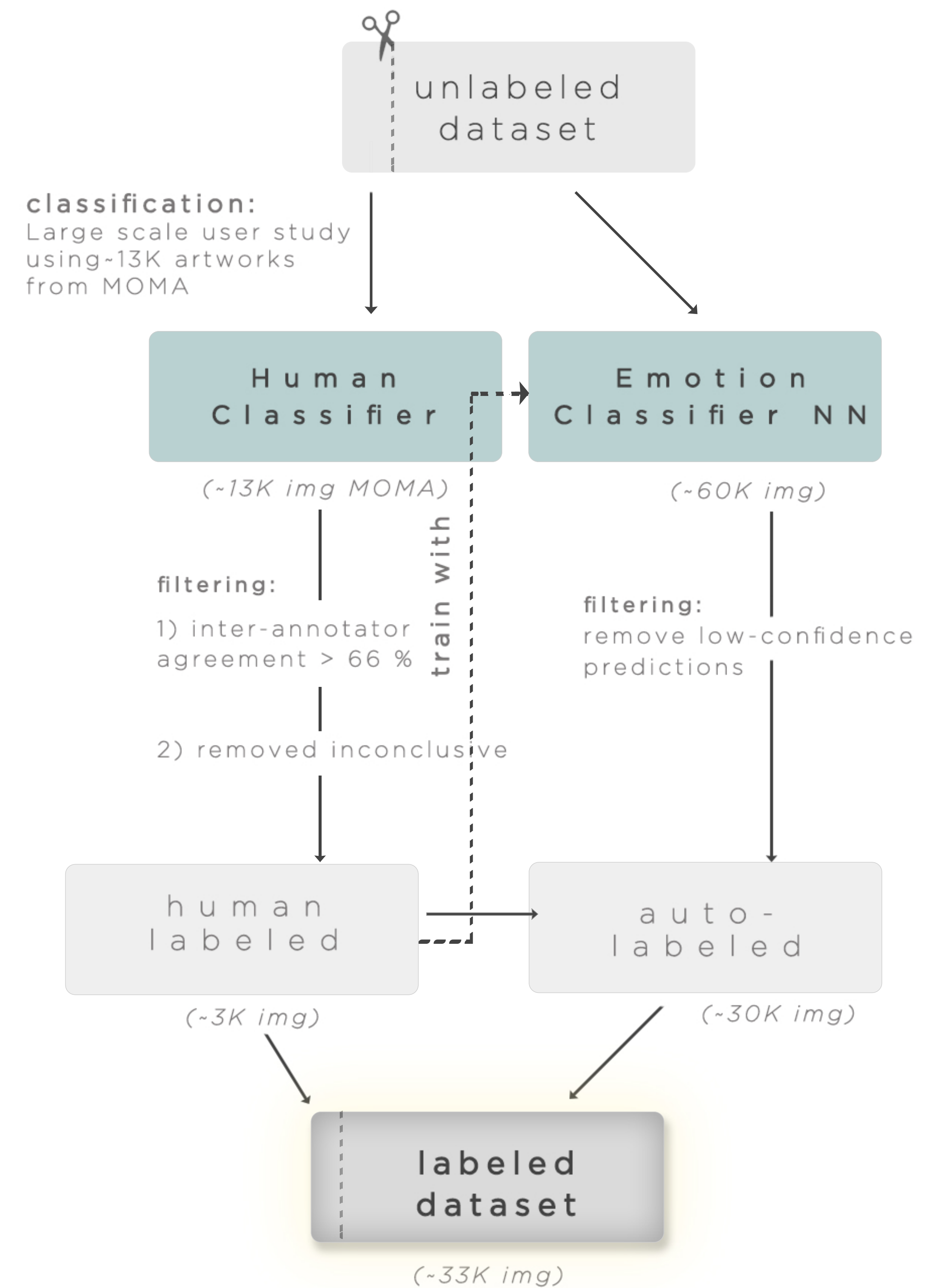
### Raw Data Collection



### Model Description

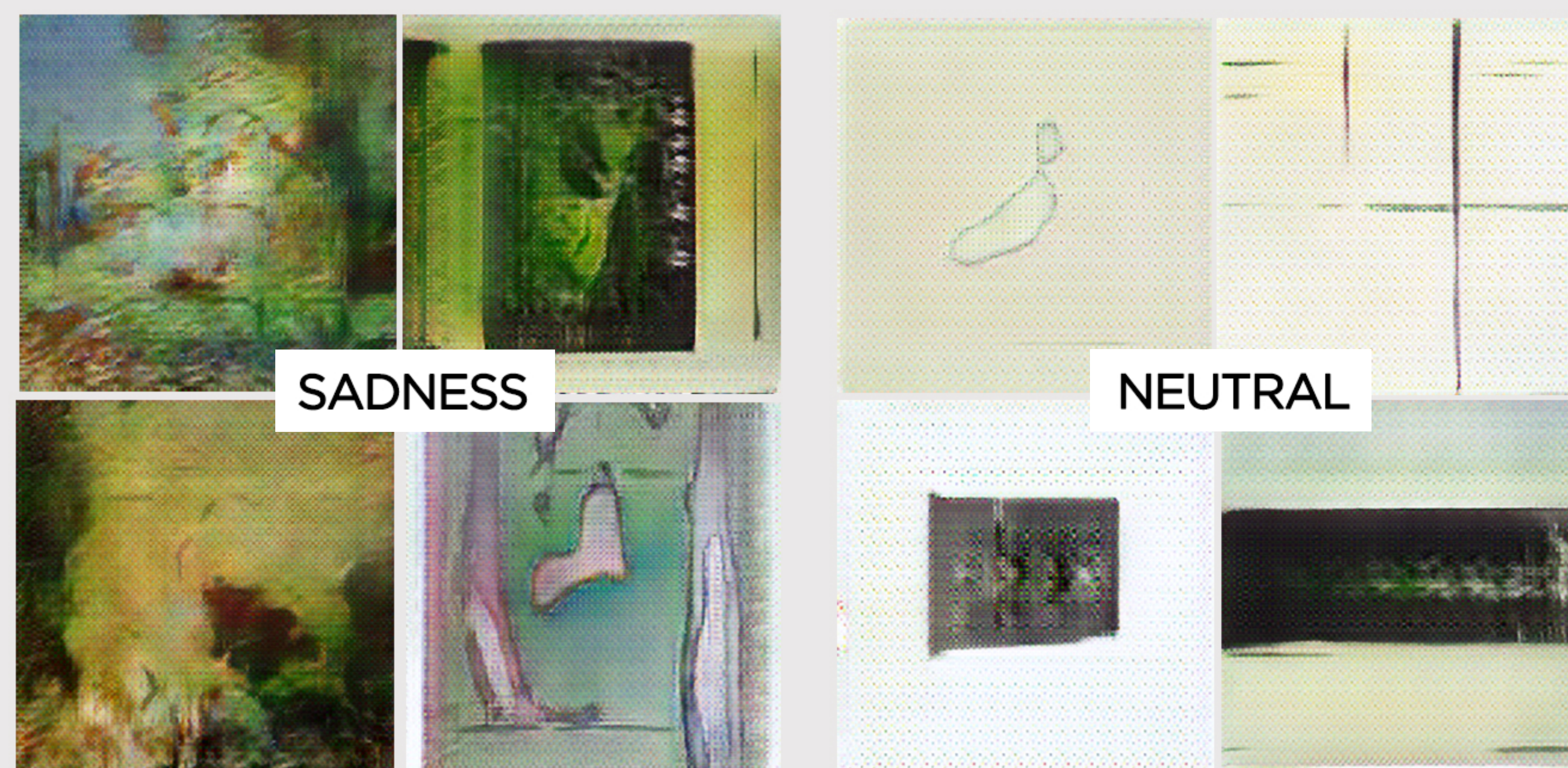


### Labeling Data



### RESULTS

Agreement with previous psychology literature, e.g., bright colors for arousal, such as red for anger and dark colors for unpleasant and low arousal, such as sadness and fear.



Artworks by the Emotional GAN conditioning on various emotion categories